



Beetle.



LITE  
PAPER



Beetle.



# BUSINESS

# INTRODUCTION

The recruitment industry is fraught with inefficiencies, including time-consuming manual processes, biased decision-making, and limited transparency. Recruiters often rely on outdated screening techniques and resume parsing tools that do not provide a comprehensive view of a candidate's skills, experience, and potential. This can lead to biased decision-making, which can exclude qualified candidates from the hiring process.

Job seekers, on the other hand, face a lack of transparency and limited control over their personal data. Candidates often do not know what happens to their personal information after they apply for a job, and they may be unaware of the factors that influence a recruiter's decision to hire or reject them. This can create mistrust and limit the overall candidate experience. Also, the job application process today is a very tedious process, making it a job in itself.







Freelancers today encounter a multitude of challenges that include limited access to opportunities, unpredictable income streams, difficulty in marketing and self-promotion, lack of collaboration and networking opportunities, time-consuming administrative tasks, unclear job requirements and expectations, limited access to tools and resources, and high commission fees on freelancing platforms. Addressing these challenges requires innovative solutions that empower freelancers, streamline workflows, and create a more equitable and supportive environment for independent professionals to thrive.



# MARKET

# OPPORTUNITY



**\$500  
billion**

**Global Recruitment Market**



**\$2 trillion**

By 2025

**Freelance Economy**

In a global recruitment market valued at over \$500 billion and a freelance economy projected to reach \$2 trillion by 2025, Beetle stands at the forefront of a burgeoning industry ripe for disruption. The current landscape is marred by inefficiencies, with manual processes, biased decision-making, and limited transparency plaguing both recruiters and freelancers.

Beetle's innovative AI-driven platform addresses these pain points head-on, offering a transformative solution that streamlines workflows, enhances transparency, and empowers users with greater control over their data and opportunities. With a market ripe for change and projected growth on the horizon, Beetle presents a compelling opportunity to reshape the future of work on a global scale.





# PRODUCTS AND VALUE PROPOSITION





# \$BEETLE TOKEN

Introducing the heart of our ecosystem—the \$Beetle token. \$Beetle empowers freelancers to stake tokens, granting them a stake in platform revenues, thereby enhancing their earnings potential and reinforcing their dedication to our community. Simultaneously, entrepreneurs enjoy streamlined transactions and minimal commission fees, guaranteeing a seamless experience within our bustling marketplace.

But that's not all! Job seekers and recruiters alike can harness the power of the \$Beetle token to revolutionize their hiring process. By utilizing \$Beetle, job seekers gain access to premium features, enhancing their visibility and attracting top-notch opportunities. Recruiters, on the other hand, benefit from a refined talent pool and reduced overhead costs, enabling them to discover the perfect match efficiently.

In essence, \$Beetle isn't just a token—it's a catalyst for growth, fostering symbiotic relationships between freelancers, entrepreneurs, job seekers, and recruiters within our dynamic ecosystem.



Network



Community



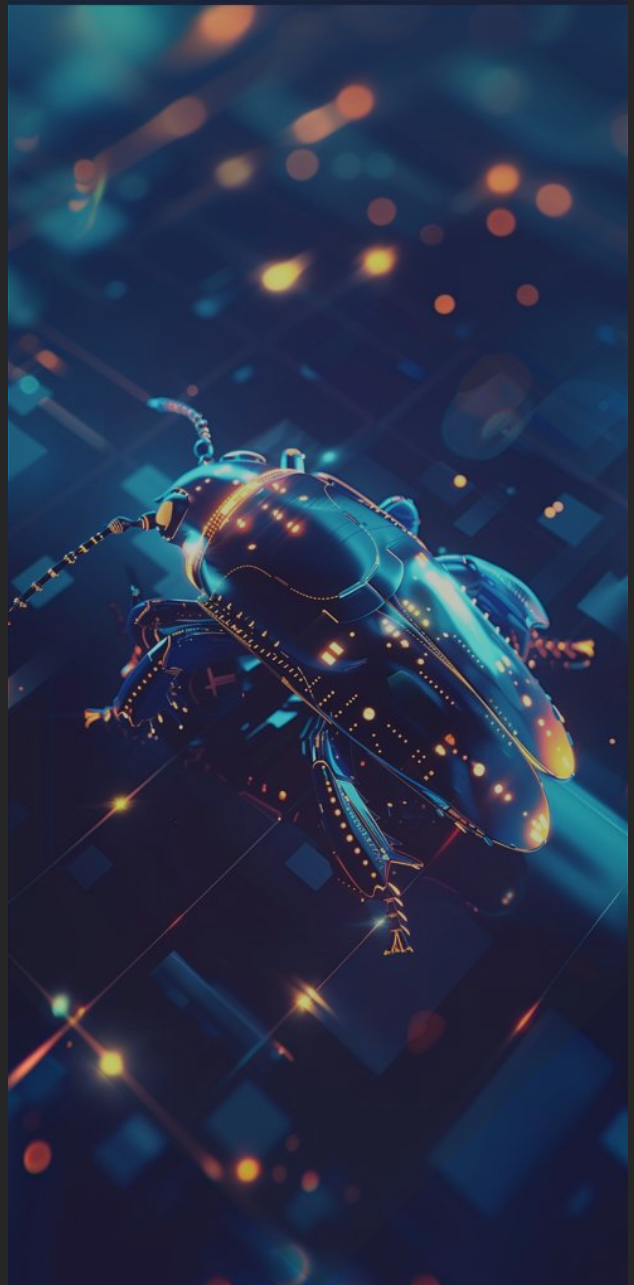
Technical Support



# OLA AI

## A Hybrid Freelancer Platform

OlaAI, our flagship hybrid freelancer platform. Seamlessly blending human expertise with AI technology. OlaAI offers freelancers access to a diverse marketplace of projects spanning every industry and skill set. But that's not all—entrepreneurs can effortlessly source talent, collaborate on projects, and streamline workflows like never before.



WWW.BEETLE-AI.COM

---

## Unique Selling **Proposition (USP):**

- Seamless integration of human expertise and AI technology sets OlaAI apart from traditional freelancer platforms
- Revenue-sharing opportunities incentivize freelancers to actively engage with the platform and stake \$Beetle tokens
- Comprehensive support and resources ensure a positive experience for both freelancers and entrepreneurs, fostering long-term success and growth within our community



# OJA**AI**

## AI Productivity **Tools Marketplace**

OjaAI, our curated marketplace of AI productivity tools. Designed to enhance efficiency and streamline workflows, OjaAI equips users with cutting-edge tools to tackle today's fast-paced digital landscape with confidence.

---

### Unique Selling **Proposition (USP):**

- Curated marketplace of AI productivity tools offers users access to a wide range of cutting-edge solutions for various tasks and industries
- Flexible pricing options and subscription plans cater to every budget and need, ensuring accessibility for all users
- Comprehensive support and resources empower users to maximize tool utilization and effectiveness, driving tangible results and success



# OWOAI

## Telegram Bot

OwoAI transforms collaboration by enabling users to effortlessly handle financial transactions, task assignments, and file sharing—all within the familiar Telegram interface. Whether receiving payments for services rendered, staking Beetle tokens, trading cryptocurrencies, or sniping newly launched tokens, OwoAI offers a centralized platform for financial activities, empowering users to streamline workflows, boost productivity, and maintain organization—all from the convenience of their Telegram chats.

---

## Unique Selling Proposition (USP):

- **Integrated Financial Functionality:** OwoAI stands out with its comprehensive financial capabilities, allowing users to seamlessly handle payment receipts, Beetle token staking, cryptocurrency trading, and token sniping—all within Telegram.
- **Centralized Collaboration Hub:** Offering peer-to-peer communication and task management functionalities, OwoAI provides users with a centralized platform for collaborating, facilitating smoother workflows and heightened productivity.
- **Community-Centric Support:** Backed by comprehensive support and resources, OwoAI ensures a positive user experience, fostering long-term engagement and success within the vibrant Beetle community.



# AYOAI

## Job Application Bot

AyoAI, our innovative job application bot designed to simplify and enhance the job application process. Leveraging advanced algorithms, AyoAI scans through countless job listings, matches candidates with suitable opportunities, and applies on their behalf. AyoAI tweaks candidate's CV's and cover letters, making them a perfect fit for the job role advertised, and also uses a human-like avatar to prepare candidates for interviews, giving them instant feedback after mock interviews.



---

## Unique Selling Proposition (USP):

- Advanced algorithms and personalized support set AyoAI apart from traditional job search platforms
- Real-time notifications keep candidates informed and engaged throughout the job application process
- Comprehensive resources and tools empower candidates to maximize their chances of success and stand out from the competition

# IFEAI

## Recruitment Bot

IfeAI, our revolutionary recruitment bot designed to streamline candidate sourcing, screening, and engagement. Leveraging AI-powered algorithms, IfeAI revolutionizes the way employers operate by offering precise automation tailored to their needs. With IfeAI, employers can automate tedious tasks such as resume screening, interview scheduling, and candidate outreach, freeing up valuable time to concentrate on strategic initiatives.



WWW.BEETLE-AI.COM

---

## Unique Selling Proposition (USP):

- AI-powered algorithms and automation set IfeAI apart from traditional recruitment processes
- Data-driven insights into candidate qualifications and fit improve hiring decisions and drive better results.
- Comprehensive support and resources ensure a positive experience for recruiters, fostering long-term engagement and success within our community.



# ADEAI

## Candidate **Verification**

AdeAI leverages blockchain technology to offer recruiters a fast, secure, and seamless method for verifying candidates' credentials. By securely storing and validating candidate information on the blockchain, AdeAI ensures the integrity and authenticity of credentials, eliminating the risk of fraud or tampering.

### Unique Selling **Proposition (USP):**

- **Blockchain-Powered Verification:** AdeAI utilizes blockchain technology to securely authenticate and store candidate credentials, ensuring tamper-proof verification and enhancing trust in the recruitment process.
- **Effortless Verification Process:** With AdeAI's user-friendly interface and automated verification capabilities, recruiters can quickly and seamlessly verify candidates' credentials with ease.
- **Centralized Verification Hub:** AdeAI serves as a centralized platform within the Beetle ecosystem, streamlining the verification process and providing recruiters with a single source of truth for candidate credentials.
- **Enhanced Security and Reliability:** By leveraging blockchain's immutable ledger, AdeAI enhances the security and reliability of candidate verification, reducing the risk of data manipulation or fraud.



Transaction Fees



Staking Fees



High Quality



Advertising Revenue



Partnership and  
Integration Fees



Consultation and  
Advisory Services



Data and Analytics  
Services



Licensing and Franchise  
Fees

# REVENUE MODEL

This revenue model provides a diversified approach to generating income while leveraging the Beetle token's role as the primary currency within the ecosystem. By offering a range of services, features, and revenue streams, the platform can ensure sustainability, growth, and profitability over the long term.



# TOKENOMICS

BeetleAI is a pioneering Artificial Intelligence (AI) recruitment solutions provider dedicated to revolutionizing the recruitment industry. Our mission is to streamline, optimize, and automate processes, paving the way for a smarter and more efficient recruitment process. With our proprietary AI bots, we empower organizations to enhance their recruitment processes without the need for significant system alterations, and give job seekers and freelancers access to tools, support and an equitable and prosperous future.

- **Token Ticker: \$BTL**
- **Total Supply: 1,000,000,000**
- **Locked Supply: 850,000,000**
- **Chain: EVM & BRC-20**

## Token Sale Rounds

### **Private Round:**

Allocation: 5% (50,000,000)

Price: \$0.0030 per \$BEETLE

### **Pre-Seed Round:**

Allocation: 10% (100,000,000)

Price: \$0.0045 per \$BEETLE

### **Public Round:**

Allocation: 5% (50,000,000)

Price: \$0.0060 per \$BEETLE

## **Token Tax**

0 - 999 holders - 4% tax

1,000 - 1,999 holders - 3% tax

2,000 - 2,999 holders - 2% tax

3,000 - 3,999 holders - 1% tax

4,000+ holders - 0% tax

(contract renounced)

## Tax Rewards

The tax is collected in a company wallet and every month 15% of all the tax revenue will be allocated back to use in the RewardsAI program.

## Token Distribution

Private Round: 5% (50,000,000)

Pre-Seed Round: 10% (100,000,000)

Public Round: 5% (50,000,000)

Marketing: 17% (170,000,000)

Partnerships: 8% (80,000,000)

Exchange Liquidity: 15% (150,000,000)

Team & Advisors: 20% (200,000,000)

Farms/Ecosystem: 20% (200,000,000)

## Token Sale & Distribution

The \$BEETLE tokens will be distributed through an IDO, with further details to be announced. We are committed to a fair and transparent distribution process that will provide opportunities for a wide range of participants.

# TOKEN UTILITY

The \$Beetle token will give holders access to:

## RewardsAI

BeetleAI's RewardsAI platform seamlessly integrates AI bots into both B2B and B2C models via a SaaS subscription model. This not only ensures a steady stream of revenue but also drives advancements in AI technology. What sets RewardsAI apart is its community-centric approach, empowering \$BEETLE token holders to influence monthly revenue allocation. Whether they choose to bolster token market increases, provide liquidity support, or enhance farming resilience, the decision lies with the community. To participate in BeetleAI, a minimum of 100,000 \$BEETLE tokens is required. The program incentivizes long-term commitments through its farming system, with token distributions based on lock-in durations of 180, 90, and 60 days.

## Premium Tiers

Exclusive benefits within the BeetleAI SaaS platforms are reserved for the top 100 token holders. A hierarchical structure guarantees inclusivity, granting these top holders complimentary access to premium-tier tools. This ensures that committed community members can fully utilize BeetleAI's suite of products without financial obligation. Additionally, they enjoy discounted access to events and other perks within the ecosystem.

## SaaS Subscription Discounts

Token holders enjoy tiered discounts on subscription fees for all bots, corresponding to their token holdings. These discounts are designed to accommodate a diverse range of holders:



# TOKEN UTILITY

50,000 tokens: 5% discount

100,000 tokens: 7.5% discount

250,000 tokens: 10% discount

500,000 tokens: 15% discount

1,000,000 tokens: 20% discount

*If a holder ranks among the Top 100 token holders as previously mentioned, they receive complimentary access to all SaaS tools, entitling them to a 100% discount.*

## **Privileged Access**

Investors holding a minimum of 1,000,000 \$BEETLE tokens are entitled to exclusive early access to alpha/beta versions and new product launches. This privilege is extended to a broader investor base, encouraging valuable feedback and cultivating a sense of ownership and community engagement. These esteemed community members will gain access to a dedicated communication channel with the internal team, facilitating direct interaction and collaboration.

## **Voting Rights**

Token holders play a crucial role in shaping the product development process, with a minimum of 100,000 \$BEETLE required for voting eligibility. The implementation of a weighted voting system guarantees fair representation, fostering a democratic environment within the ecosystem. Initially, this entails the resource management of the RewardsAI funds, with future plans to extend voting rights to a broader range of decisions.

# OUR ROAD MAP

## STAGE 1

Q1 (2024)

- Ideation
- Feasibility study
- Market research
- Website Launch

## STAGE 2

Q2 (2024)

- Marketing begins
- Token creation
- Smart Contract Audit
- Apply to launchpads
- OjaAI launch
- IfeAI launch
- Pre seed sale
- Private sale
- Public sale & TGE
- List token on CoinGecko & CoinMarketCap

## STAGE 4

Q4 (2024)

- AyoAI launch
- OlaAI launch
- Yields Farming 2

## STAGE 3

Q3 (2024)

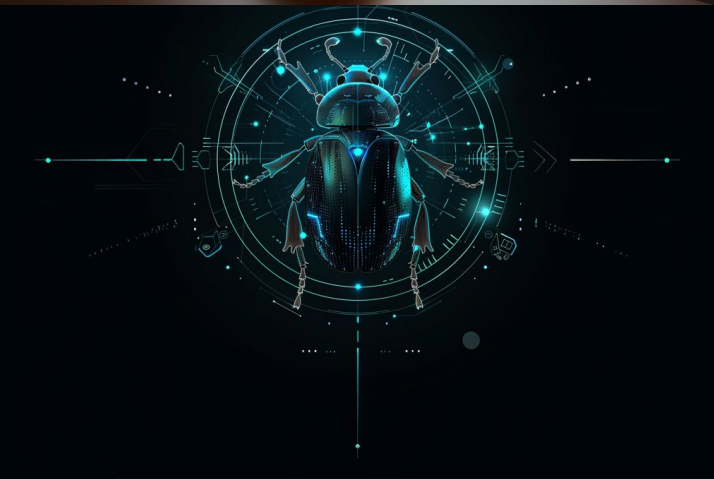
- Airdrop event
- Yield Farming 1 commences
- AdeAI
- EarnAI rewards scheme commences
- List \$Beetle on Tier 2 CEX
- Onboarding of 200 AI Products
- Data traffic insight and reporting
- Proof of indexing
- SubQuery Network Explorer and dApp

## STAGE 5

Q1 (2025)

- List on Tier 1 CEX
- DoctorAI launch





## CONCLUSION

The recruitment industry is ripe for disruption, and AI and blockchain technology offer innovative solutions that can create a more efficient, fair, and transparent recruitment process. The combination of AI and blockchain technology can provide recruiters with powerful tools for identifying and hiring the best candidates, while ensuring that the recruitment process is secure and transparent. As the industry moves towards more advanced technology, it is vital for recruiters to stay ahead of the curve and embrace innovative solutions like AI and blockchain technology to gain a competitive edge.

A woman with dark hair, wearing a dark jacket, is smiling and looking towards a robot head. The robot head is metallic and has a human-like face with visible mechanical details. The background is a blurred industrial setting with yellow overhead beams and various machinery. The overall lighting is dim, with a teal/cyan color cast.

# THANK YOU

BEETLE-AI